



CHERY is a global automobile brand and one of the world's fastest-growing auto manufacturers, trusted by customers across key international markets including the UAE, Saudi Arabia, Australia, Turkey, and the UK. Driven by innovation, advanced engineering, and a strong commitment to safety, CHERY continues to shape the future of mobility through intelligent, next-generation vehicles.

- No. 1 Automobile Exporter of China for 23 consecutive years

- In over 130+ Countries

- Global user base of over 19+ million users

- One of the Fastest-Growing Automobile Company

- Global 5-Star Safety NCAP Rating

- Fortune Global 500 Excellence



### MASTER AUTO ENGINEERING | MASTER GROUP OF COMPANIES

Master Auto Engineering (MAE), part of the Master Group of Industries, is one of the country's most trusted conglomerates with over 60 years of excellence and a 40-year legacy in the automotive sector. Built on precision, quality, and innovation, MAE blends global expertise with local insight to bring New Energy Vehicles and sustainable technology to Pakistan, advancing a smarter, cleaner, and more connected automotive future.

**15 COMPANIES**

Textile, Foam, Bedding, Energy,  
Automotive Assembling, Manufacturing

**16 BUSINESS FACILITIES**

8 across Sindh, 8 across Punjab

**18,000+ EMPLOYEES**

Highly Qualified Labour,  
Foreign Qualified Management



To Visit The Website,  
Scan The QR Code

FOR PERSONALISED ASSISTANCE OR FURTHER INFORMATION, VISIT YOUR NEAREST DEALERSHIP OR CONNECT WITH US

54-DARUL AMAN COOPERATIVE HOUSING SOCIETY, MAIN SHAHRAH-E-FAISAL, KARACHI.

CUSTOMER.CARE@CHERYPAKISTAN.COM | 021-111-624379 | CHERYMASTERPAKISTAN



**TIGGO 7 PHEV**

**LIVE FOR MORE**



**CSH CHERY SUPER HYBRID TECHNOLOGY**

# CSH | CHERY SUPER HYBRID

WORLD'S BEST **PHEV** TECHNOLOGY

FIFTH-GENERATION HYBRID TECHNOLOGY


OPTIMIZED PERFORMANCE | EFFICIENCY | RANGE

 Comprehensive Power: **342 hp**

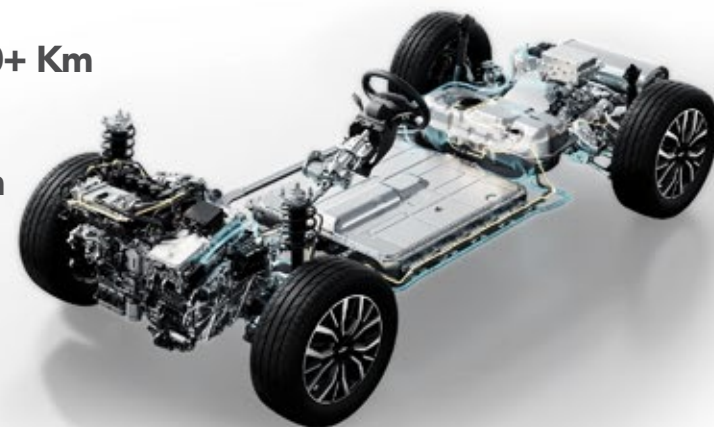
 Combined Range: **Up to 1200+ Km**

 Comprehensive Torque: **525 Nm**

 Pure EV Range: **Up to 90+ Km**

 Mechanical Transmission Efficiency: **98.5%**

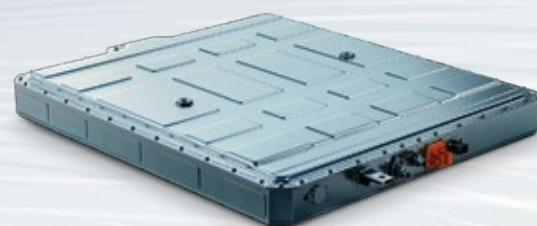
 Battery Capacity: **18.3 kWh**



DEDICATED HYBRID ENGINE (DHE)



DEDICATED HYBRID TRANSMISSION (DHT)



DEDICATED HYBRID BATTERY (DHB)



## LIVE FOR MORE ADVENTURE

VEHICLE TO LOAD - 3.3 KW



ELECTRIC GRILL  
2000 W



INDUCTION  
COOKER 2800 W



PROJECTOR  
2400 W



OUTDOOR ILLUMINATION  
50 - 150 W



ELECTRIC KETTLE  
800 W



ELECTRIC SCOOTY  
400 W

LIVE FOR MORE COMFORT AND THRILL



DIAMOND STUDS FRONT GRILLE



INFINITY TAIL LAMPS



18" RIMS SETUP

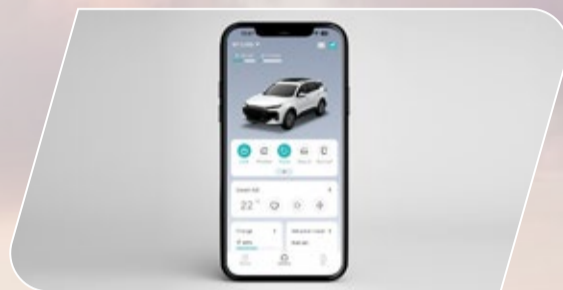
TIGGO 7 **PHEV** DUAL WAIST LINE WITH  
**BOLD LOOK**



8 SAFETY AIRBAGS



LEVEL 2 ADAS



CHERY MOBILE APPLICATION



FRONT ROW HEATED AND VENTILATED SEATS

ELECTRIC SEAT ADJUSTMENT: DRIVER 6-WAY | PASSENGER 4-WAY  
MULTIPLE DRIVE MODES: ECO | NORMAL | SPORT



IMMERSIVE SONY PREMIUM AUDIO SYSTEM  
WITH 8 SPEAKERS



RAPID 50W WIRELESS CHARGER



SEAMLESS 24.6" DUAL CURVED DISPLAY



EXPANSIVE SECOND ROW CABIN



WIDE-ANGLE PANORAMIC SUNROOF  
WITH ANTI-PINCH



MASSIVE BOOT SPACE 1386L WITH  
2ND ROW SEATS FOLDED



PREMIUM BLACK INTERIOR

# LIVE FOR MORE PEACE OF MIND

A warranty you can rely on, so you get more confidence with every drive. Backed by a growing dealership network across Pakistan, support goes wherever you go.

## WARRANTY THAT INSPIRES CONFIDENCE

STANDARD WARRANTY\*

**6 YEARS**

OR 150,000KM

BATTERY WARRANTY\*

**8 YEARS**

OR 160,000KM



\*WHICHEVER COMES FIRST

# 7 REASONS TIGGO 7 STANDS OUT



MASTER GROUP  
63 YEAR TRUSTED LEGACY



CHINA'S NO.1 EXPORT BRAND



CHINA'S MOST EXPORTED C SUV



WORLD'S BEST  
PLUG-IN HYBRID TECHNOLOGY



HIGHEST PURE EV &  
COMBINED DRIVING RANGE



PAKISTAN'S SAFEST C SUV



861 MM LEGROOM (COMFORTABLY  
ACCOMMODATES A PASSENGER UP TO 6'2" TALL)

## LIVE FOR MORE CHOICES



AZURE BLUE

LUNAR WHITE

TITANIUM GRAY

COSMIC SILVER

MIDNIGHT BLACK

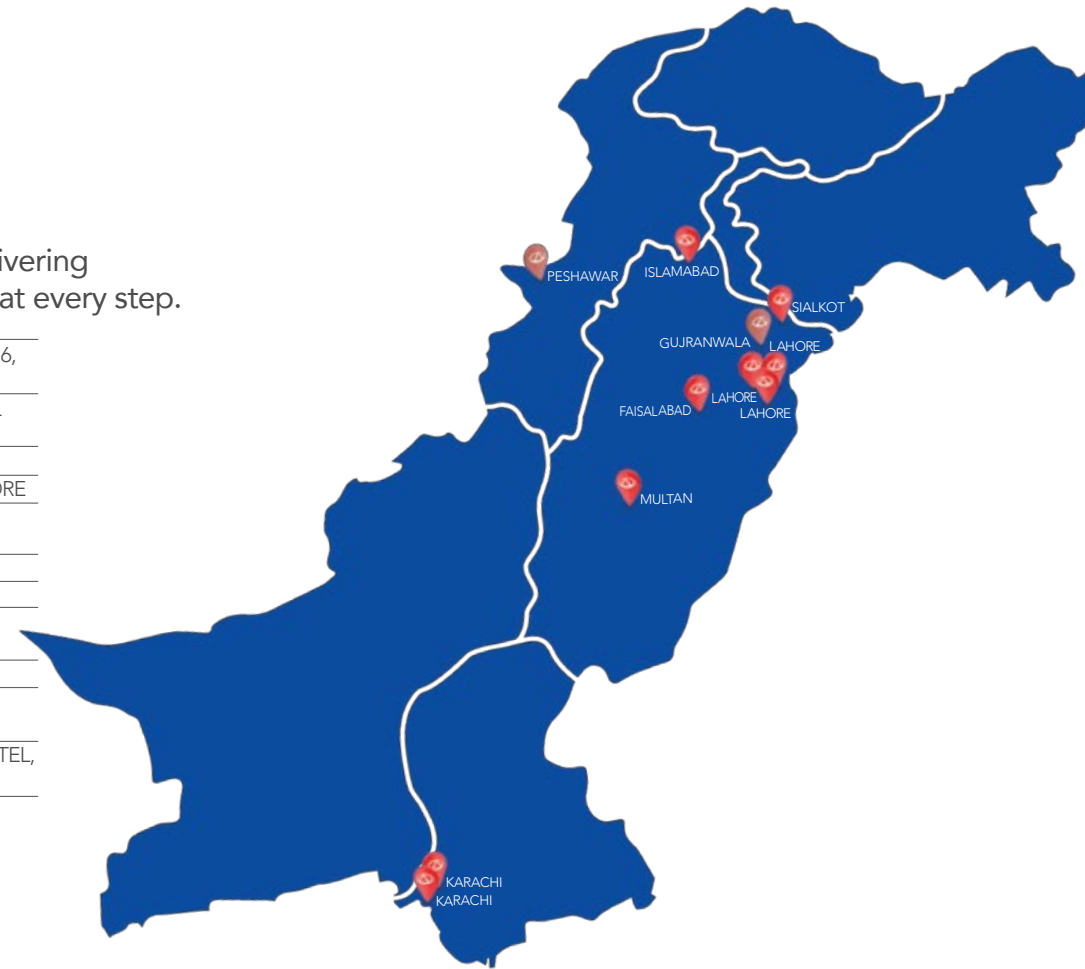
CRIMSON RED

# HELLO CHERY

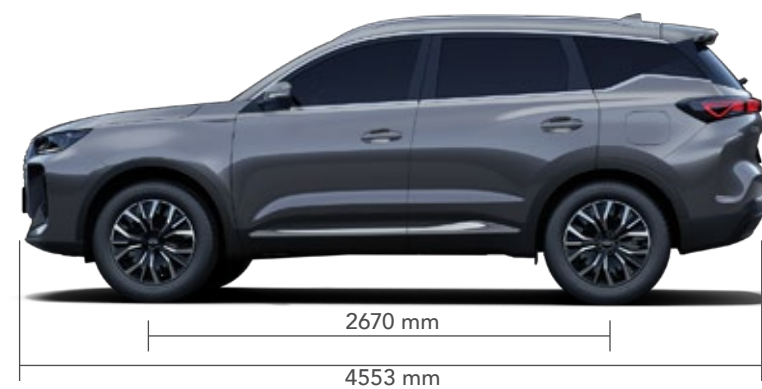
## 35 DEALERSHIP ACROSS PAKISTAN

Every Chery dealership is crafted as an extension of the brand, delivering elevated service, personalised attention, and a sense of assurance at every step.

KARACHI	CHERY SEAVIEW	SHOP NO. 8/G, COM 3 BILAWAL CHORANGI, BLOCK 6, CLIFTON, KARACHI
KARACHI	CHERY SOUTH	PLOT NO. 18, SECTOR NO. 23, KORANGI INDUSTRIAL AREA, KARACHI
LAHORE	CHERY FORTUNE	17-KM, MAIN MULTAN ROAD, KOT GOJRA, LAHORE
LAHORE	CHERY RAVI	32 MAIN JAIL ROAD, NEAR MOZANG CHUNGI, LAHORE
LAHORE	CHERY DEFENCE	JAMMU STOP NEAR NAWAZ SHARIF INTERCHANGE RING ROAD, DHA PHASE 5, LAHORE
ISLAMABAD	CHERY METROPOLIS	P-178 KORANG ROAD, SECTOR I-10/3, ISLAMABAD
SIALKOT	CHERY STALLION	1KM DASKA ROAD, PAKKI KOTLI, SIALKOT
FAISALABAD	CHERY CANAL	ABDULLAH PUR UNDERPASS, WEST CANAL ROAD, FAISALABAD
MULTAN	CHERY CITY OF SAINTS	348-KHANEWAL ROAD, MULTAN
PESHAWAR	CHERY KP	SUFAID DHERI, PESHAWAR RING ROAD, PESHAWAR, KPK (COMING SOON)
GUJRANWALA	CHERY GT	KHASRA NO. 382, AROOP TOWN, NEAR ALEENA HOTEL, GT ROAD, GUJRANWALA (COMING SOON)



## VEHICLE SPECIFICATIONS



Model	Tiggo 7 Premium (2WD)
Dimensions - L x W x H (mm)	4,553 x 1,862 x 1,696
Wheelbase (mm)	2670
Ground Clearance (mm)	175
Seating capacity	5
<b>Engine, Motor &amp; Transmission</b>	
Engine (H4J15)	1.5TGDI
Transmission type	DHT
Displacement (cc)	1499
0-100 acceleration time (sec)	8.4
Battery Capacity (kWh)	18.3
System Comprehensive Power (KW/hp)	255 / 342
System Comprehensive Torque (N.m)	525
Pure Electric Range (km)	Up to 90+
Combine Comprehensive Range (km)	Up to 1200+
Fuel Tank Capacity (L)	60
Motor	Single
Driving modes with memory	3 (Normal, Eco, Sports)
Drive type	FWD
<b>Steering &amp; Suspension</b>	
Electric Power Steering (EPS)	Equipped
Front Suspension	MacPherson strut
Rear Suspension	Multi-link independent
<b>Tire and Braking System</b>	
EPB Electronic Parking Brake	Equipped
Autohold	Equipped
Rim size	18"
Tyre size	225/60 R18
<b>Safety</b>	
Force limited, Pretension, Height adjustable seatbelt (D + P)	Equipped
Seat belt not fastened alarm (D + P)	Equipped
Dual front airbags	Equipped
Front side airbags	Equipped
Side curtain airbags	Equipped
Driver knee airbag	Equipped
Intermediate airbag	Equipped
Electronic engine immobilizer	Equipped
Vehicle anti-theft alarm	Equipped
<b>Driver Assistance</b>	
540° vision (transparent chassis)	Equipped
Radar	Front + Rear
ABS + EBD + BAS + ESP + HAC + HDC + ELK	Equipped
TPMS Tire Pressure Monitoring System	Equipped
Central door lock	Equipped
Cruise control (Adaptive Cruise Control ACC + Integrated Cruise Assist ICA)	Equipped
Speed limit reminder	Equipped
AEB Automatic Emergency Braking	Equipped
LDW + LDP + LCA	Equipped
FCW Forward Collision Warning	Equipped
BSD Blind Spot Detection	Equipped
RCW Rear-end Collision Warning	Equipped
DOW Door Opening Warning	Equipped
RCTA Rear Cross Traffic Alert	Equipped
RCTB Rear Cross Traffic Braking	Equipped
MCB Multi-Collision Brake	Equipped
TJA Traffic Jam Assist	Equipped
DAI Drive Away Information	Equipped
DMS Driver Monitoring System	Equipped
IHC Intelligent High Beam Control	Equipped
<b>Lighting</b>	
LED headlights	Equipped
Automatic headlights	Equipped
LED Daytime Running Lights (DRL)	Equipped
Infinity LED taillights	Equipped
Dynamic turn signals (Front & Rear)	Equipped
Front fog lamps	Equipped
Rear fog lamp	Equipped

Model	Tiggo 7 Premium (2WD)
<b>Interior – Luxury</b>	
64 Multi-color ambient lighting	Equipped
Leather Steering wheel	Equipped
Multi-function steering wheel	Equipped
Faux Leather Seats	Equipped
Driver's seat electric adjustment 6-way	Equipped
Driver Seat Memory	Equipped
Driver's seat with welcome function	Equipped
Driver seat heating & ventilation	Equipped
Passenger seat electric 4-way adjustment	Equipped
Passenger seat heating & ventilation	Equipped
Second row seats manually adjustable	Equipped
Second row seat backrest 60:40 split	Equipped
Driver's sun visor with vanity mirror + Light	Equipped
Passenger sun visor with vanity mirror + Light	Equipped
Electric 4-way steering wheel adjustment	Equipped
<b>Comfort and Convenience</b>	
Dual-zone automatic air conditioning	Equipped
N95 protection with ultra-high efficiency air conditioning filter	Equipped
Air conditioning automatic defogging	Equipped
Sunglass holder	Equipped
Second row of air outlet	Equipped
Remote control key	Equipped
Induction electric tailgate (key induction)	Equipped
Four-door windows one-touch up (with anti-pinch function)	Equipped
Sound insulated Front glass	Equipped
All Transparent Glasses	Equipped
Panoramic sunroof with sunroof shade	Equipped
Electric adjustment of exterior mirrors	Equipped
External rearview mirror with integrated turn signal	Equipped
Electric folding heated exterior mirrors + autofold + floor lamp	Equipped
Exterior mirror position memory	Equipped
External rearview mirror automatically folds down when reversing	Equipped
Automatic anti-glare interior rearview mirror	Equipped
Boneless front wiper	Equipped
Rear Wiper	Equipped
<b>Infotainment</b>	
Dual curve screen (LCD meter Cluster + Infotainment display)	24.6" (12.3" + 12.3")
Bluetooth + Radio + Lion Smart cloud system	Equipped
Smart Voice Assistant	Equipped
Snapdragon Qualcomm 8155 chip	Equipped
Mobile phone mapping function	CarPlay + Android Auto
Speakers	8 Speaker surround sound (Sony)
<b>Other Functions</b>	
Vehicle to Load - V2L (KW)	3.3
Wireless charger (50 W)	Equipped
Front & rear 12V power supply	Equipped
Front Row: 1 USB interface + TYPE-C, Second Row: 1 USB interface	Equipped
Automatic locking	Equipped
Front center armrest with cooling/heating	Equipped
Rear center armrest	Equipped
Second row reading lights	Equipped
Illuminated front door sills	Equipped
Qibla Compass	Equipped
Portable Charger (type G)	Equipped
DC charging	40 KW
Tire sealant	Equipped

### DISCLAIMER

- Specifications, features, variants, performance, range, and charging figures are based on controlled testing and estimates; actual results may vary due to driving conditions, climate, electricity load, charger type, and other external factors.
- Vehicle variants, features, and options shown may not be available in Pakistan, and Master Auto Engineering (Pvt.) Ltd. reserves the right to change specifications and offerings without prior notice.
- Warranties and services are subject to applicable terms, conditions, exclusions, and time/mileage limits. Full details are available in the Warranty Handbook, Driver Manual, from authorised retailers, or at [www.cherypakistan.com](http://www.cherypakistan.com)